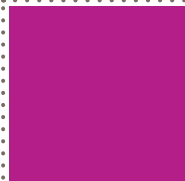
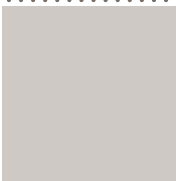
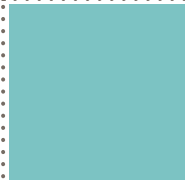
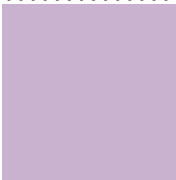
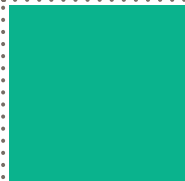
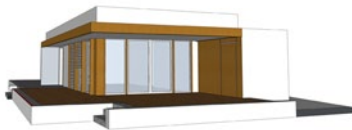




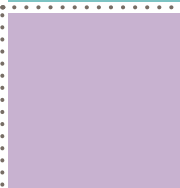
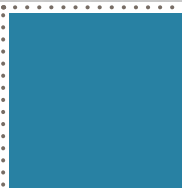
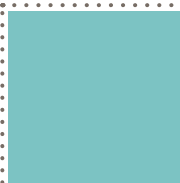
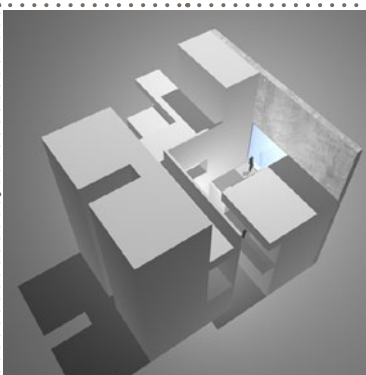
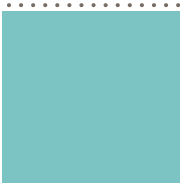
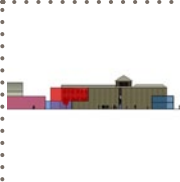
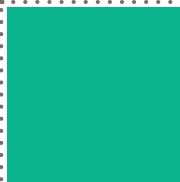
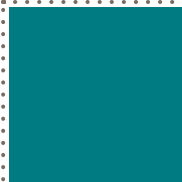
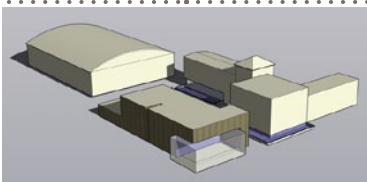
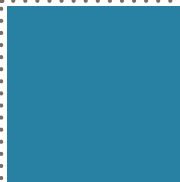
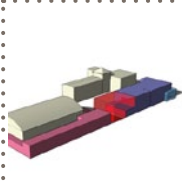
Für
unsere
Mitarbeiter
und
Bauherren

Architecture
Construction
Design GmbH
A C D

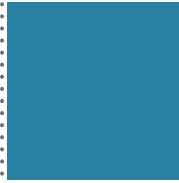
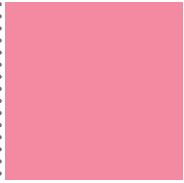
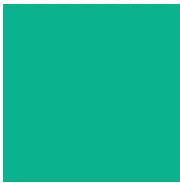
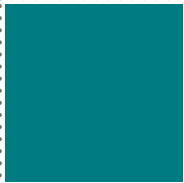
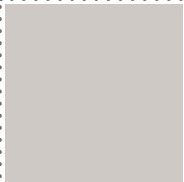
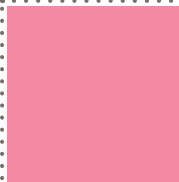
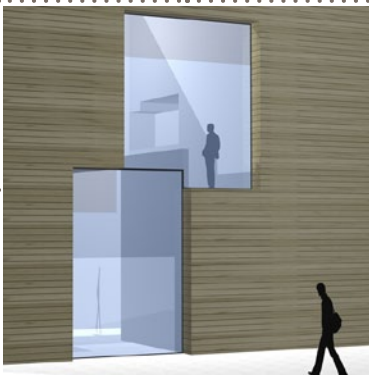
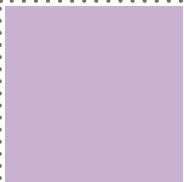
ACD GmbH - Portfolio - Projekte - 2010



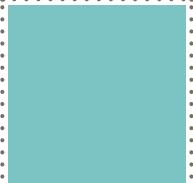
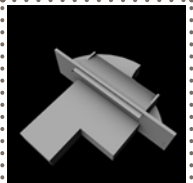
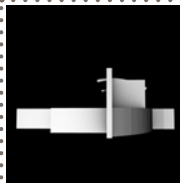
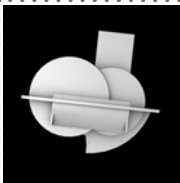
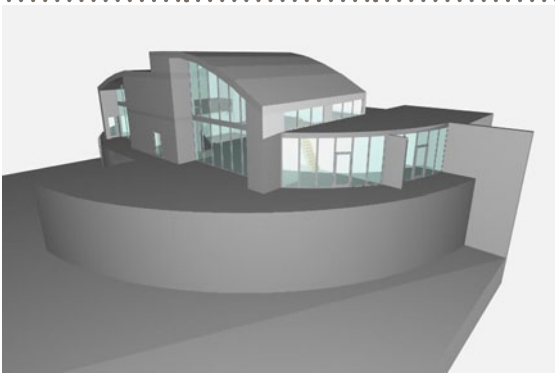
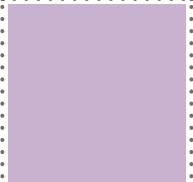
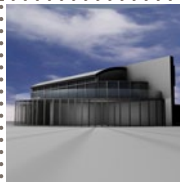
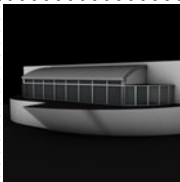
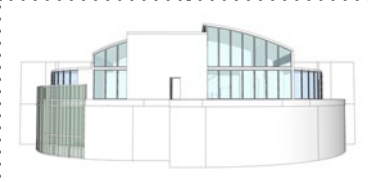
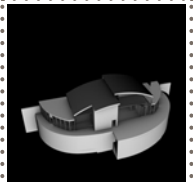
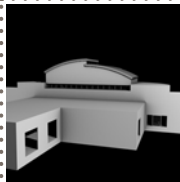
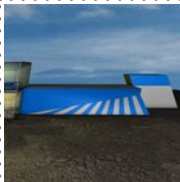
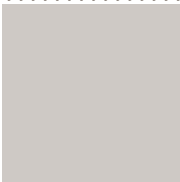
Büro- und Gästewohnung der Lübbering Stiftung



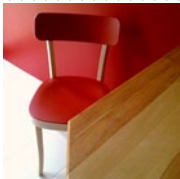
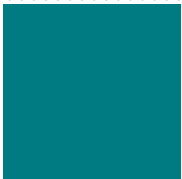
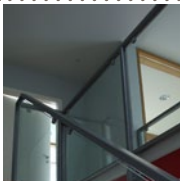
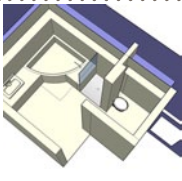
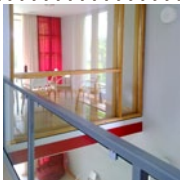
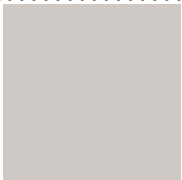
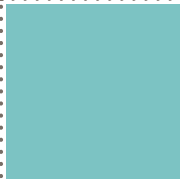
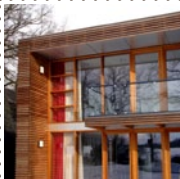
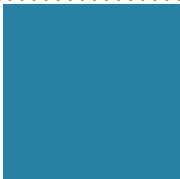
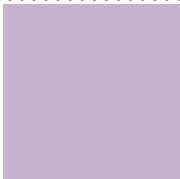
Studie für den Giebelseehallenkomplex in Petershagen ...



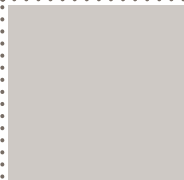
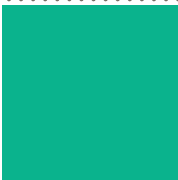
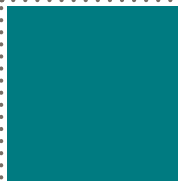
... in Zusammenarbeit mit Schubert + Partner Architekten + Ingenieure



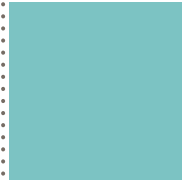
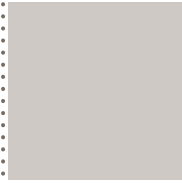
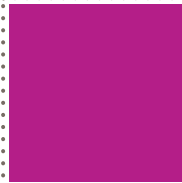
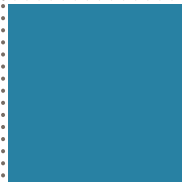
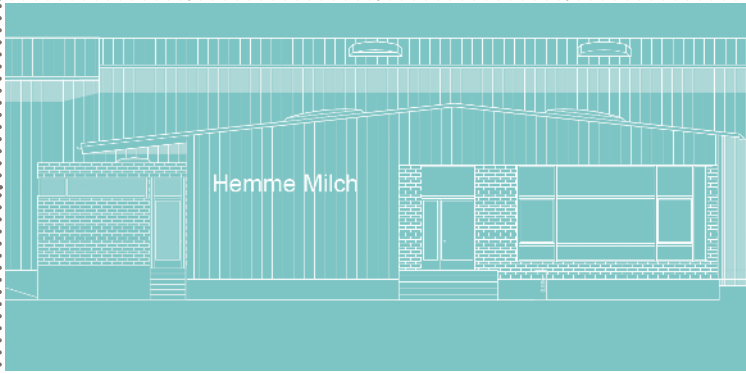
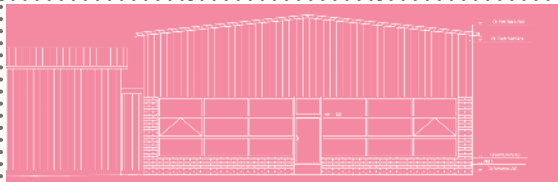
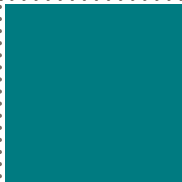
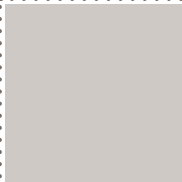
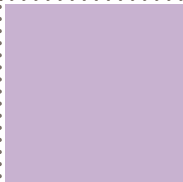
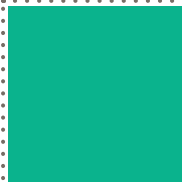
Eurochamp Hoppegarten



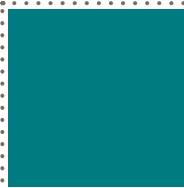
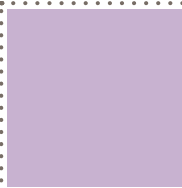
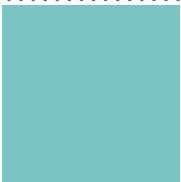
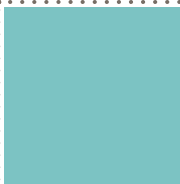
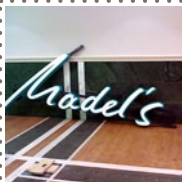
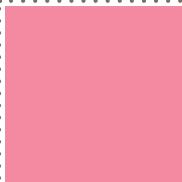
Innenausstattung Studienzentrum Frankfurt/Oder



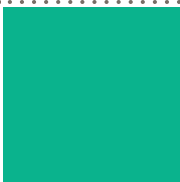
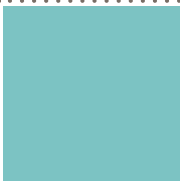
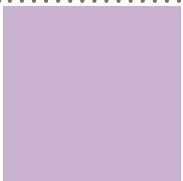
Hemme Milch II. BA / Erweiterung



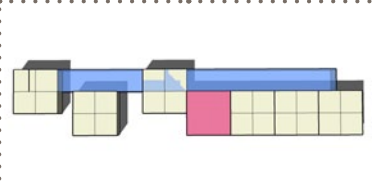
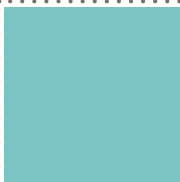
Hemme Milch III. BA / Anbau Sozialgebäude



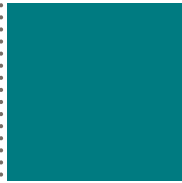
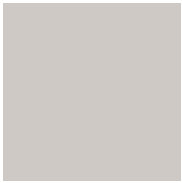
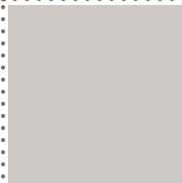
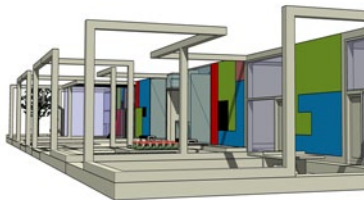
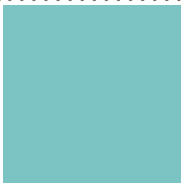
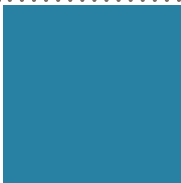
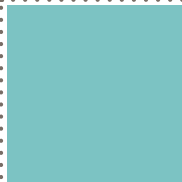
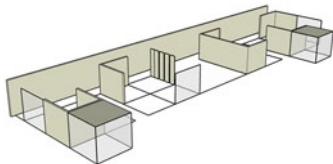
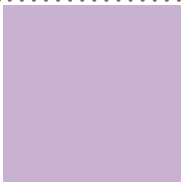
Restaurant Madel's Petershagen ...

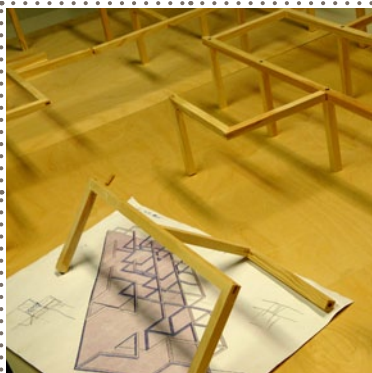
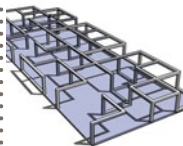
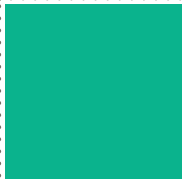
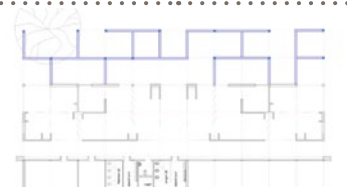
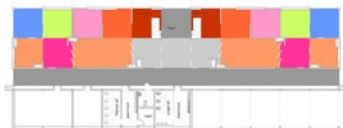
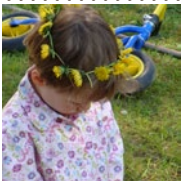
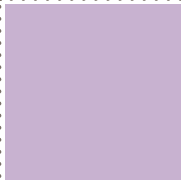
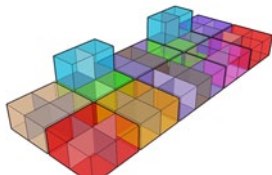
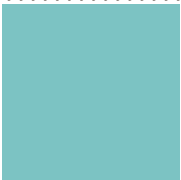


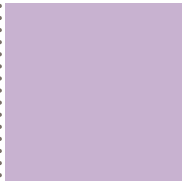
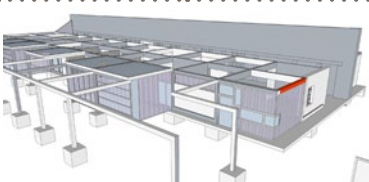
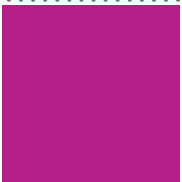
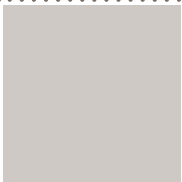
... Corporate Design in Zusammenarbeit mit Susanne Weigelt

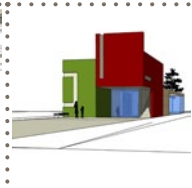
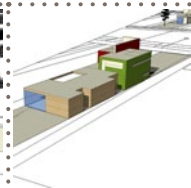
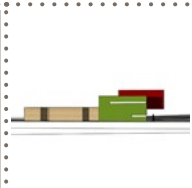
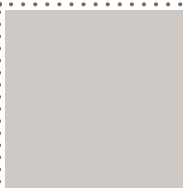
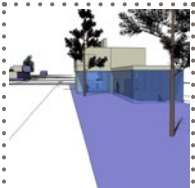
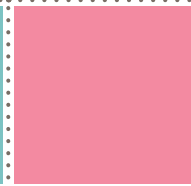
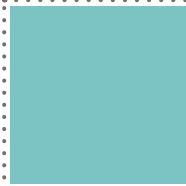
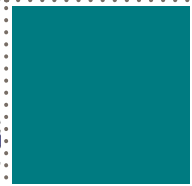
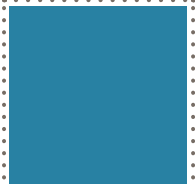
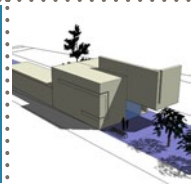
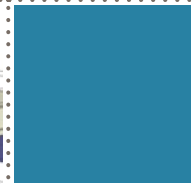
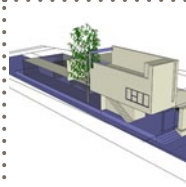
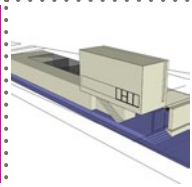
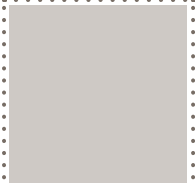
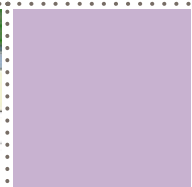
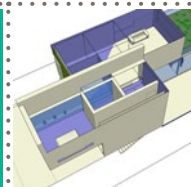
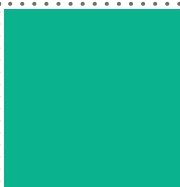
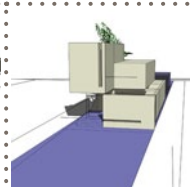
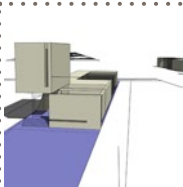
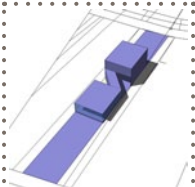


Neubau Hort Petershagen

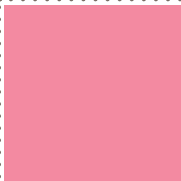
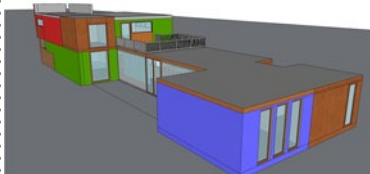
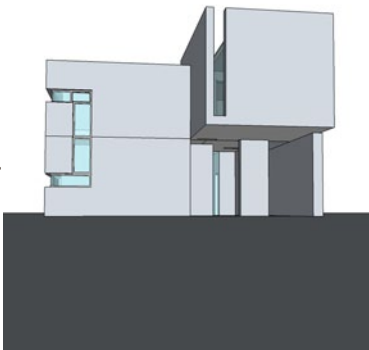
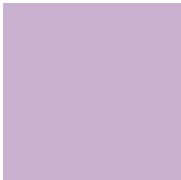
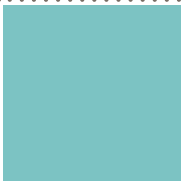


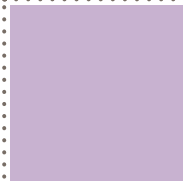
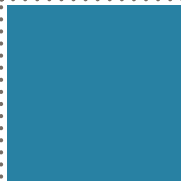
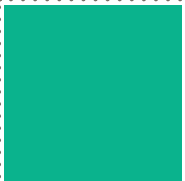
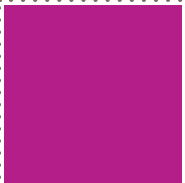




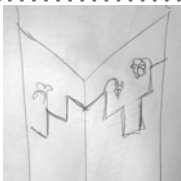


Hita Tausendfüßler Eggersdorf

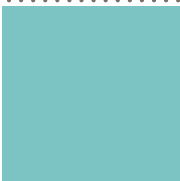
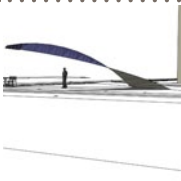
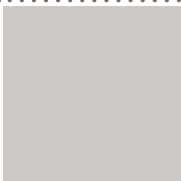
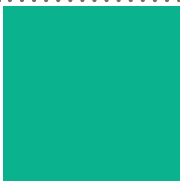
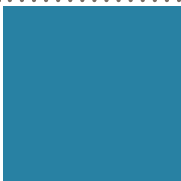




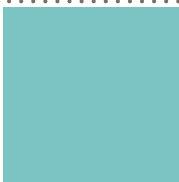
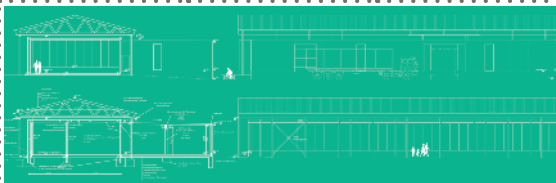
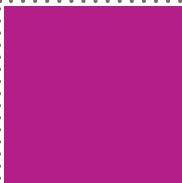
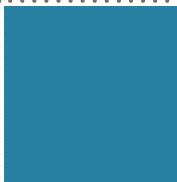
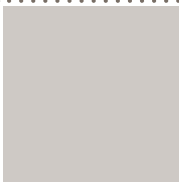
Neubau eines Wochenendhauses in Brodwin



visconti
RISTORANTE | BAR

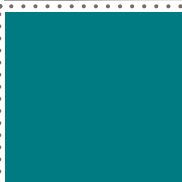
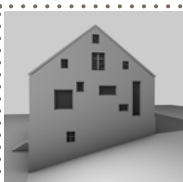
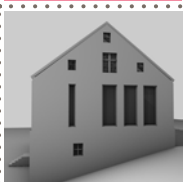
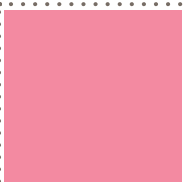
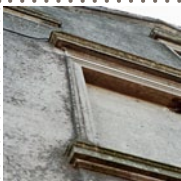
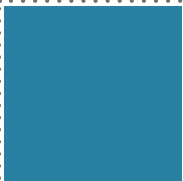


Ristorante Visconti Berlin Kurfürstendamm (Corporate Design Susanne Weigelt)

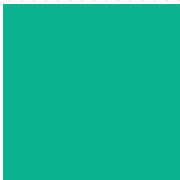
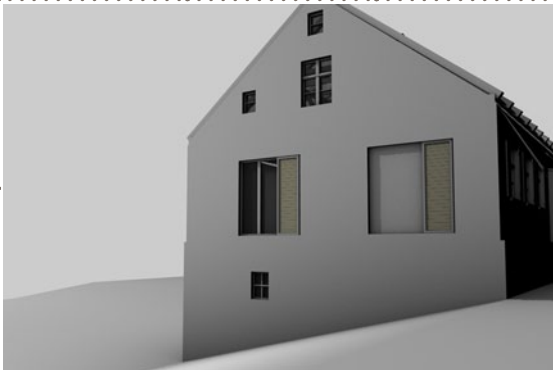
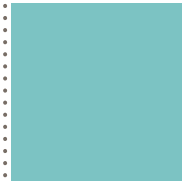
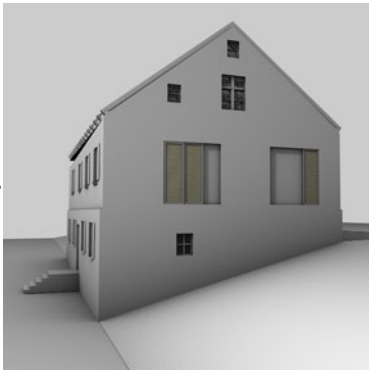
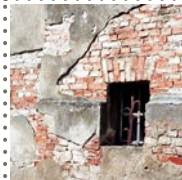
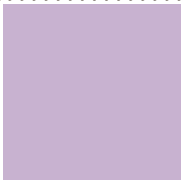
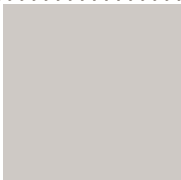


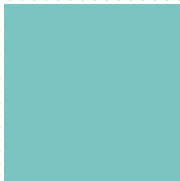
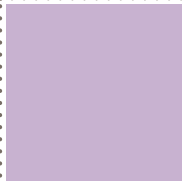
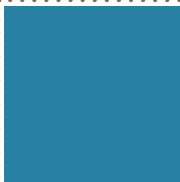
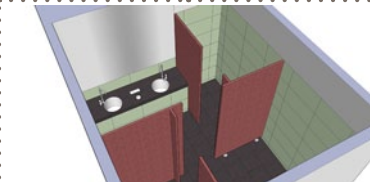
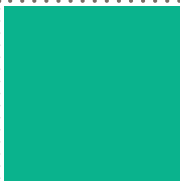
Meierei Ökodorf Brodowin



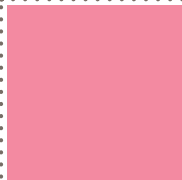
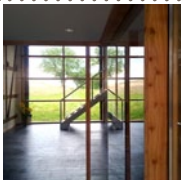
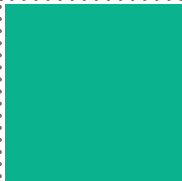
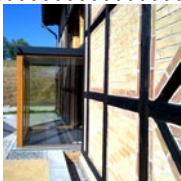
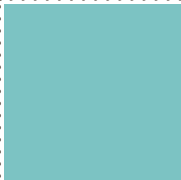
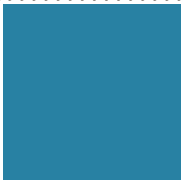


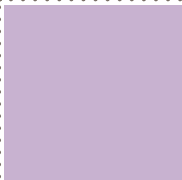
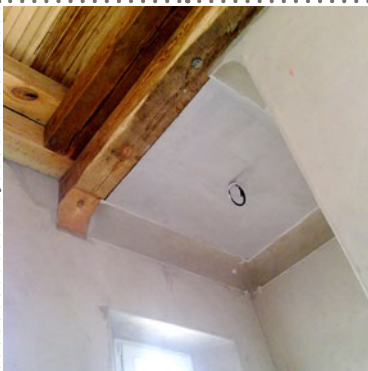
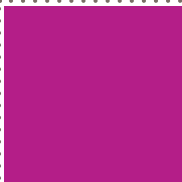
Sanierung Dammeisterhaus Zollbrücke



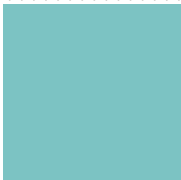
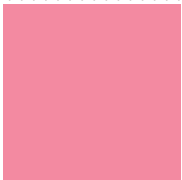
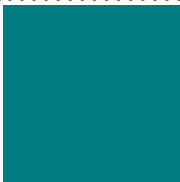
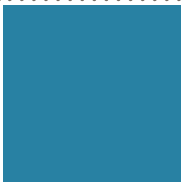
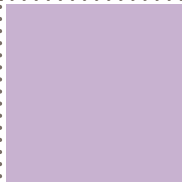


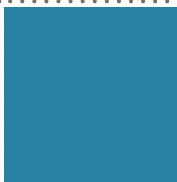
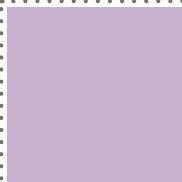
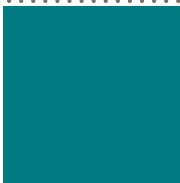
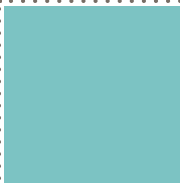
Sanierung der Fachwerkbäude des Dammeisterensembles Zollbrücke



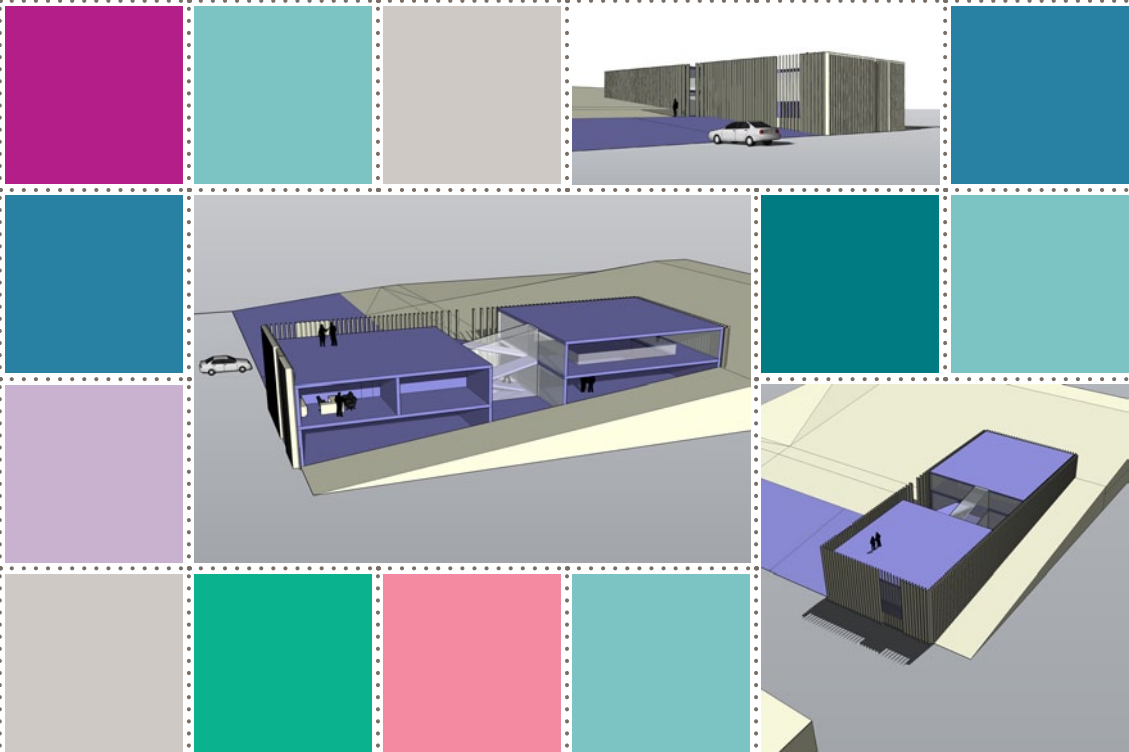


Neubau Einfamilienhaus für Familie von Maltzan in Brodowin

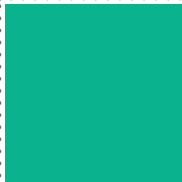
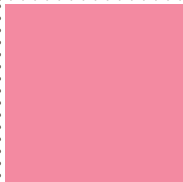
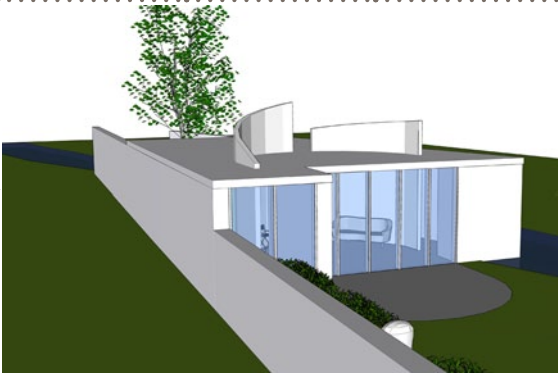
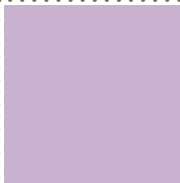
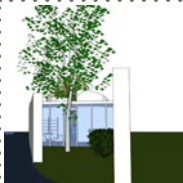




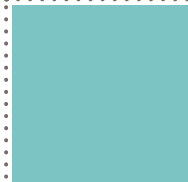
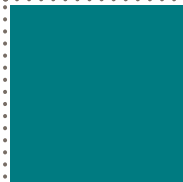
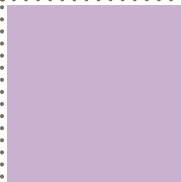
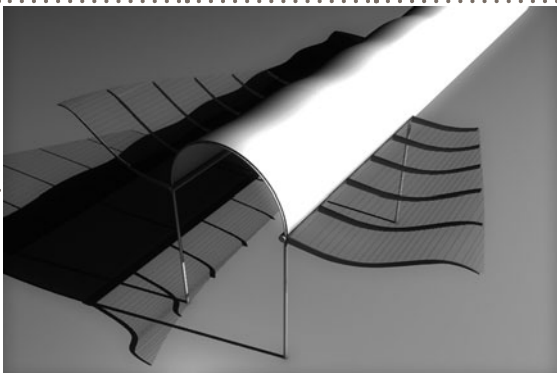
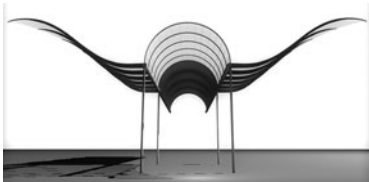
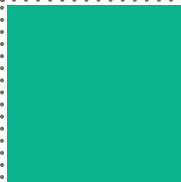
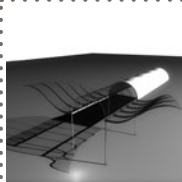
Studie für einen Übernachtungspavillon als temporärer Bau für Radtouristen



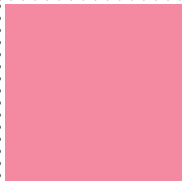
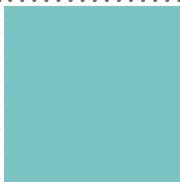
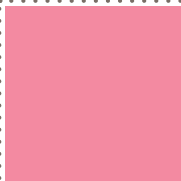
Konzept für ein Vermarktungsgebäude für regionale Produkte



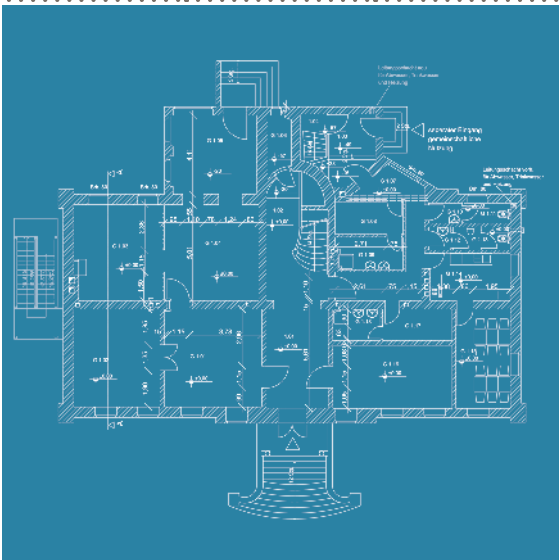
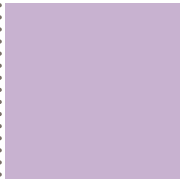
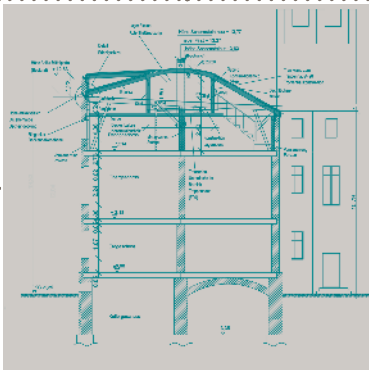
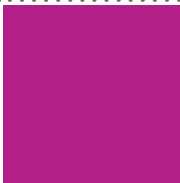
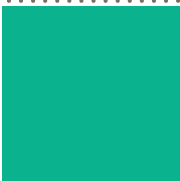
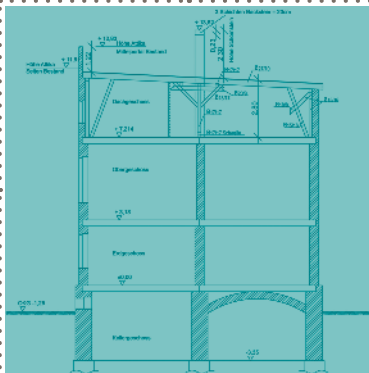
Studie für ein Atelierhaus



Konzept für ein Vordach – Hotelempfang Schloß Neuhardenberg



Sanierung und Dachgeschoßaufbau Gutshaus Hohenfelde





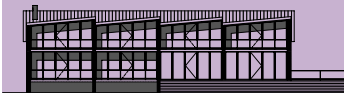
Seitenansicht



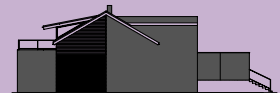
Rückansicht



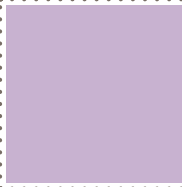
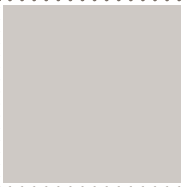
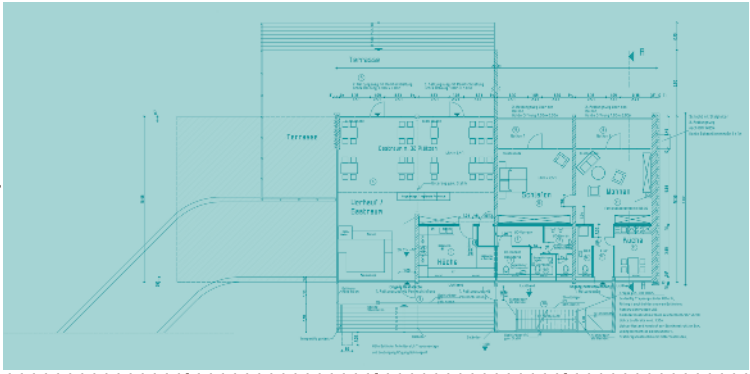
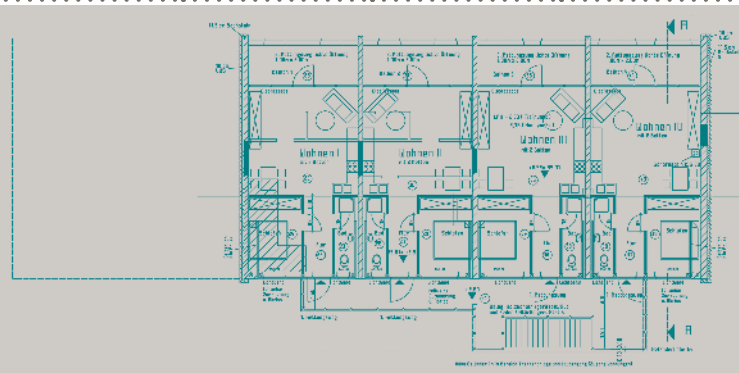
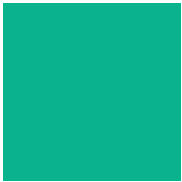
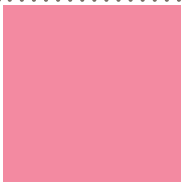
Ansicht von See



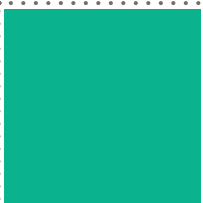
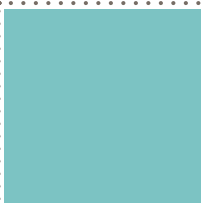
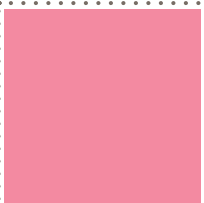
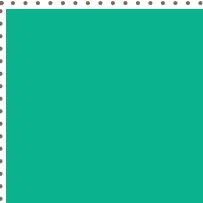
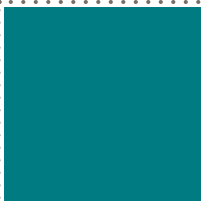
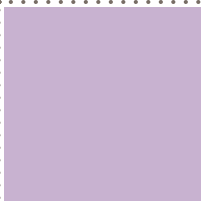
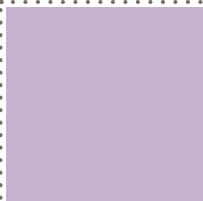
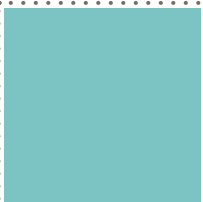
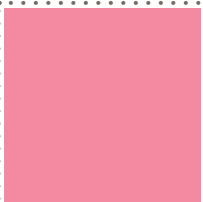
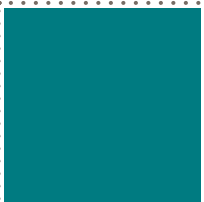
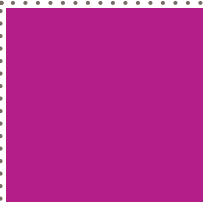
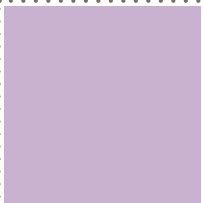
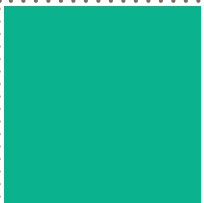
Seitenansicht



Teilweiser Rückbau Ruine und Ausbau zum Restaurant mit Ferienwohnungen



ACD GmbH - Architecture Construction Design / Schmiedegasse 3 / 16269 Bliesdorf OT Ueuvais /
Germany / Phone +49 (0)3 34 56-1 59 62 / info@acdgmhbh.de / www.acdgmhbh.de



(Gestaltung: Susanne Weigel)